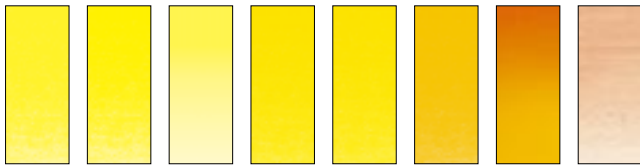
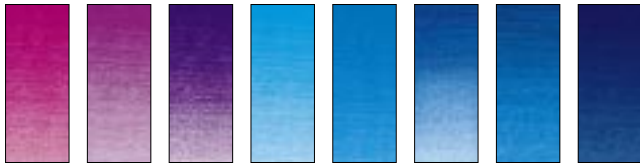


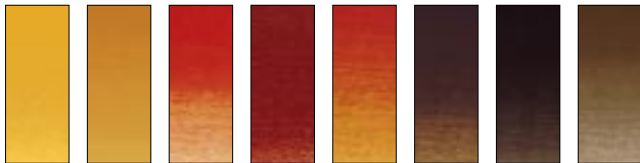
# Winton Oil Colour Range



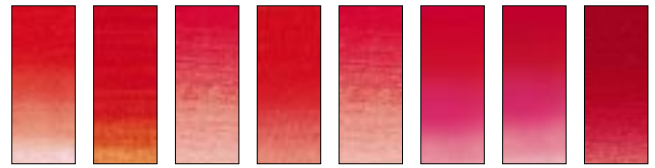
346 A O | Lemon Yellow Hue  
 087 A O | Cadmium Lemon Hue  
 119 A O | Cadmium Yellow Pale Hue  
 149 A O | Chrome Yellow Hue  
 109 A O | Cadmium Yellow Hue  
 115 A O | Cadmium Yellow Deep Hue  
 090 A O | Cadmium Orange Hue  
 257 A O | Flesh Tint



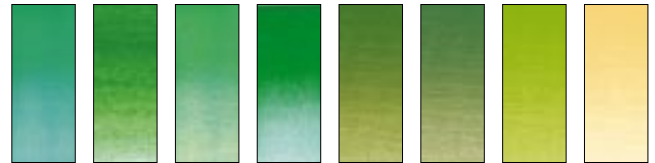
380 A T | Magenta  
 194 A O | Cobalt Violet Hue  
 229 A T | Dioxazine Purple  
 138 A T | Cerulean Blue Hue  
 179 A O (ii) | Cobalt Blue Hue  
 263 A O (ii) | French Ultramarine  
 516 A T | Phthalo Blue  
 538 A T | Prussian Blue



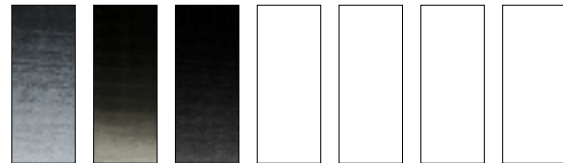
744 AA O | Yellow Ochre  
 552 AA T | Raw Sienna  
 362 AA O | Light Red  
 317 A O | Indian Red  
 074 AA T | Burnt Sienna  
 076 AA O | Burnt Umber  
 676 A O | Vandyke Brown  
 554 AA T | Raw Umber



603 A O | Scarlet Lake  
 095 A O | Cadmium Red Hue  
 682 A O | Vermillion Hue  
 098 A O | Cadmium Red Deep Hue  
 480 A T | Permanent Geranium Lake  
 502 A T | Permanent Rose  
 478 A T | Permanent Crimson Lake  
 468 A T | Permanent Alizarin Crimson



241 A O | Emerald Green  
 483 A O | Permanent Green Light  
 145 A O | Chrome Green Hue  
 696 A T | Viridian Hue  
 459 AA O | Oxide of Chromium  
 637 A T | Terre Verte  
 599 A T | Sap Green  
 422 AA O | Naples Yellow Hue



465 A O | Payne's Gray  
 331 AA O | Ivory Black  
 337 AA O | Lamp Black  
 245 A O | Flake White  
 242 AA O | Flake White Hue  
 644 AA O | Titanium White  
 748 AA O | Zinc White

## Key to Coding

AA Extremely Permanent  
 A Permanent  
 T Transparent/Semi-Transparent  
 O Opaque/Semi-Opaque

ASTM  
 I Permanent for artists' use  
 II Permanent for artists' use  
 Where no ASTM rating is listed, please refer to the Winsor & Newton permanence rating  
 (ii) Bleached by acids, acidic atmospheres

Sizes available:  
 21ml Tubes - All colours  
 37ml Tubes - All Colours  
 60ml Tubes - Whites only  
 120ml Tubes - Whites only  
 200ml Tubes - All Colours

N.B. Flake White is not available in EU and selected other countries.

This colour chart is produced within the limitations of lithographic colour printing and is intended as a guide only.